



Registered brand of KLOZMANN.
4 Allee Victor Basch
42 000 SAINT-ETIENNE
Frankrike
Mobil: +33 6 12 27 20 24
Mail: contact@blockaxess.com
Web: www.blockaxess.com

Technical information Block'Axess Barrier

BLAX V3PL
Certified N2A
7,5 T – 50 KM/H



Version 2024-01

Table of contents

Important:

Read and understand all installation instructions before to attempting to install Block'Axess barrier on open roads.

	Page
Description and technical data	2–5
User manual	6–15

Description of the set

- The barrier can be installed and uninstalled without any lifting equipment in a few minutes by one or two operators.
- It can be installed without anchoring to the ground without risk of damaging the roadway.
- It's adjustable on its length by adding or removing elements.
- It's made of hot-dip galvanized welded blocks, connected by tubes without any visible connecting elements.
- The assemblies are invisible and can't be taken apart without special tools:
 - Two locking spanners are supplied with the barrier.
- The connecting elements are low, to let the pedestrians pass across in case of crowd movement.
- The connecting tubes are made of galvanized steel for maximum protection against corrosion and is perfectly resistant to weathering.
- Each block that makes up the Block'Axess barriers can be customized.
- The barrier is delivered on its storage rack.

Certified



Description of the elements

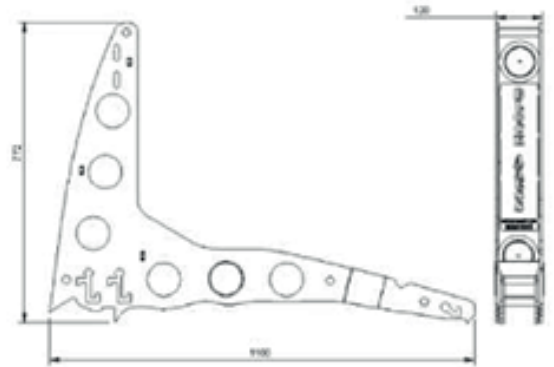
All the elements of the barrier, as well as its storage rack, are hot-dip galvanized.

Standard barrier's length 4 meters composed of :

- 7 blocks customizable OEM
- 12 connecting tubes and plugs
- 4 end locks
- 2 tightening spanners

Block's dimensions:

- Height: 772 mm / 30.39 in
- Width: 1 100 mm / 43.30 in
- Thickness: 120 mm / 4.72 in
- Weight: 25 Kgs a block



They are made of 2 steel sheets (thickness 8 mm / 0.31 in) connected with struts (thickness 8 mm).

Each block is equipped with three handling handles.

Each block is equipped with 4 reflectors for a good visibility at night.

Dimensions of the connecting tubes:

- Diameter: 70 mm / 2.75 in
- Thickness: 3 mm / 0.11 in
- Flange: 8 mm / 0.3 in
- Weight: 4 kg / 8 lbs

Dimensions of the assembled barrier:

- Space between elements (step): 640 mm / 25,19 in
- Length for 7 elements (standard): 4 Meters / 13.12 feet
- Weight for a 4 meters length: 280 Kgs / 560 lbs

Dimensions of the storage rack:

Length : 1 150 mm / 45.27 in
Width : 1 125 mm / 45.27 in
Height : 1 120 mm / 43.30 in

Weight of the rack loaded with a complete 4 meters barrier (7 blocks): 300 Kgs / 600 lbs

Possibility to store 2 barriers of 4 meters on one rack:



Included Kit RollBlock:

Composed of 7 rotating rolls (blue) and 7 fixed rolls (white).
No tools required, easy and fast setup.



Registered brand of KLOZMANN.
4 Allee Victor Basch
42 000 SAINT-ETIENNE
Frankrike
Mobil: +33 6 12 27 20 24
Mail: contact@blockaxess.com
Web: www.blockaxess.com

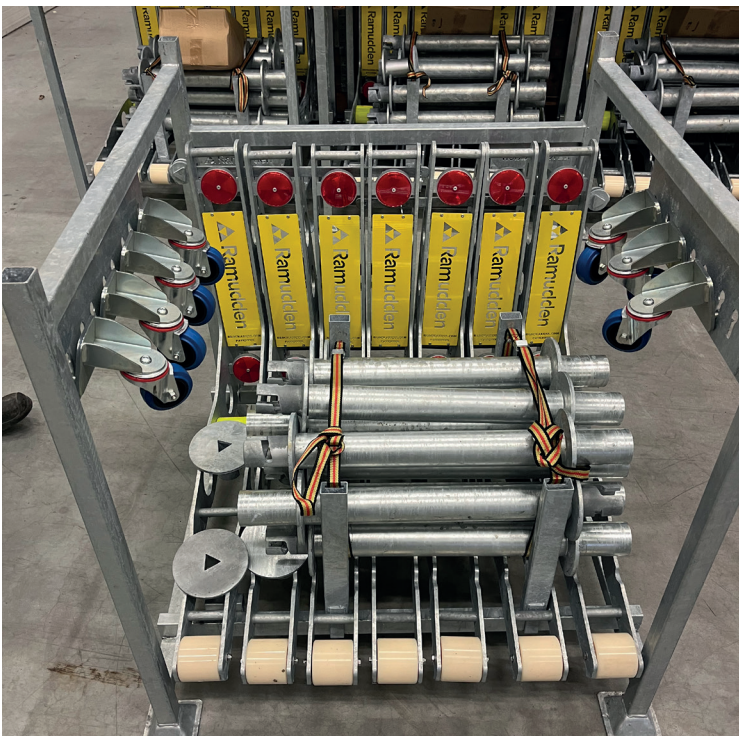
User manual Block'Axess barrier

BLAX V3PL
Certified N2A
7,5 T – 50 KM/H



Presentation

Barrier BLAX V3PL with rack Before setup

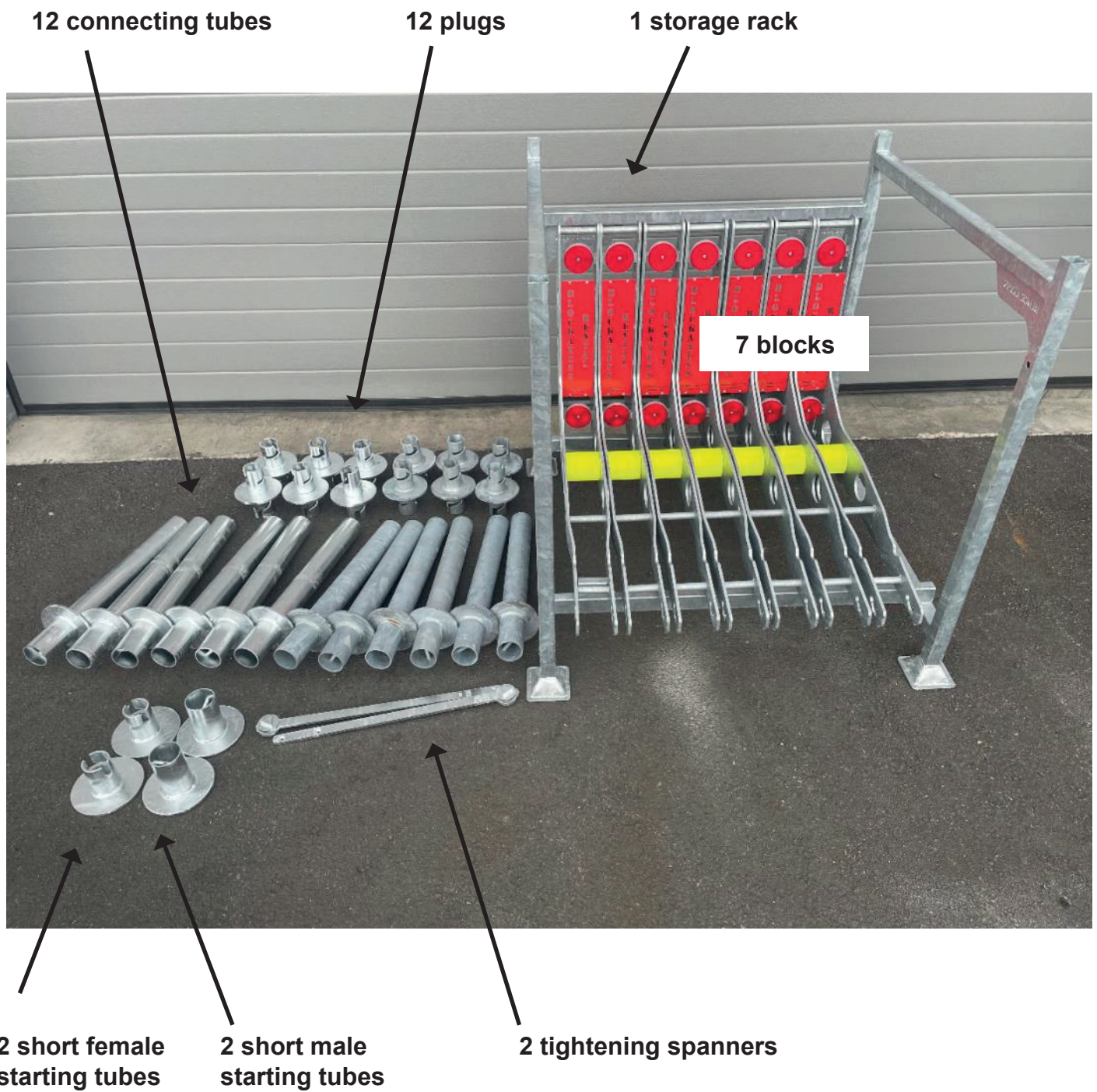


After setup



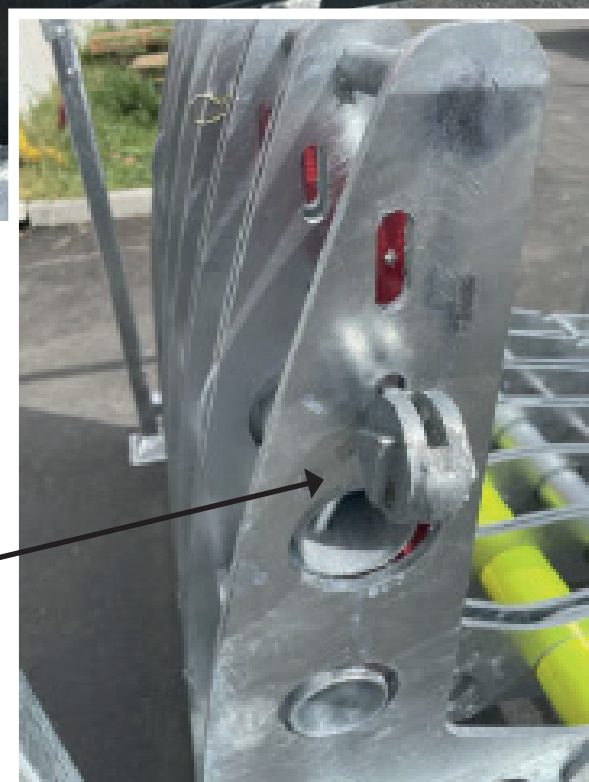
Presentation

List of components



Setup steps

1. Remove 2 specific keys from the rack.



Specific key

Setup steps

2. Place all parts following pictures



Setup steps

3. Setup 2 short start male tubes left side inside first block, then screw the plugs and connecting tubes in hole 1 and 3. (all these operations only by hand, no tools required)

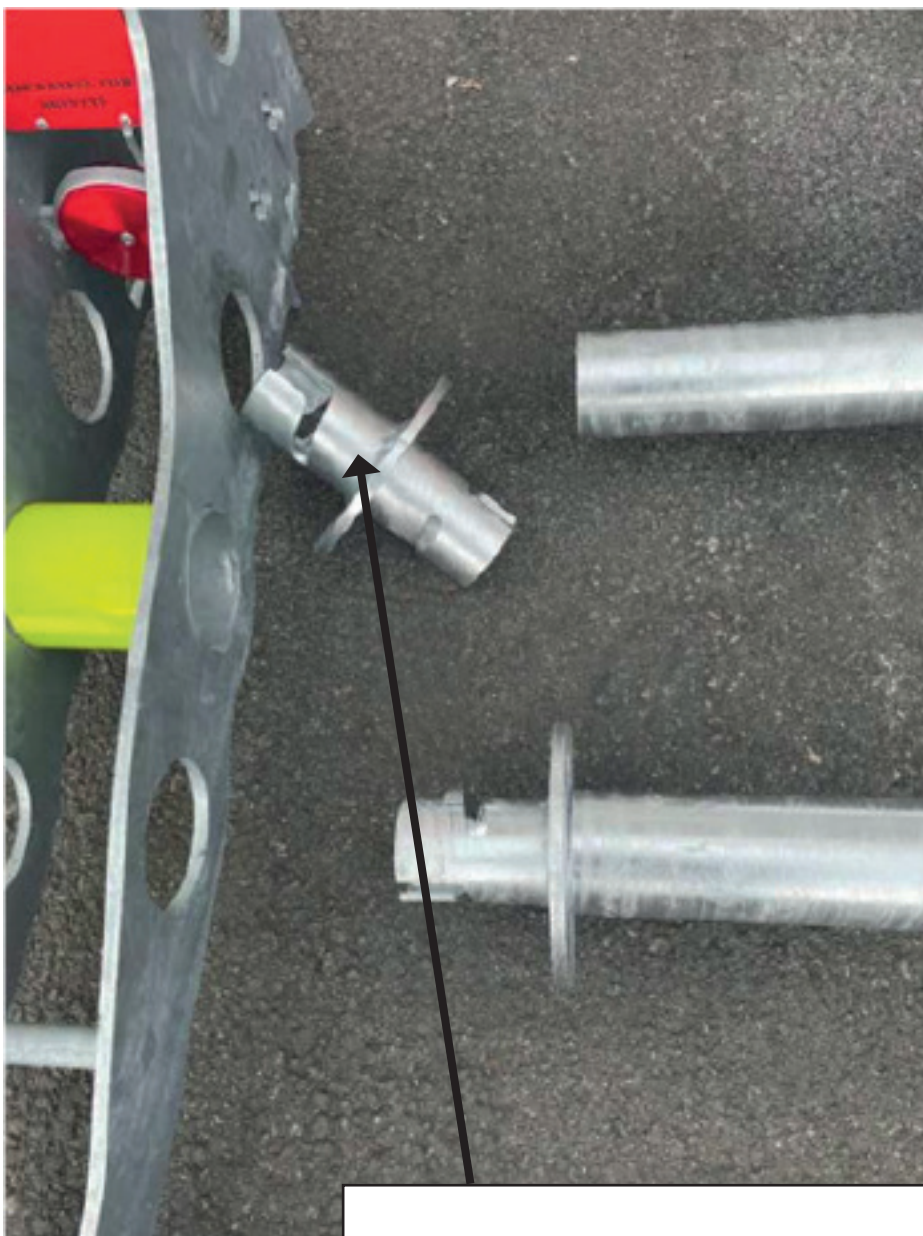


Hole 1

Hole 3

Setup steps

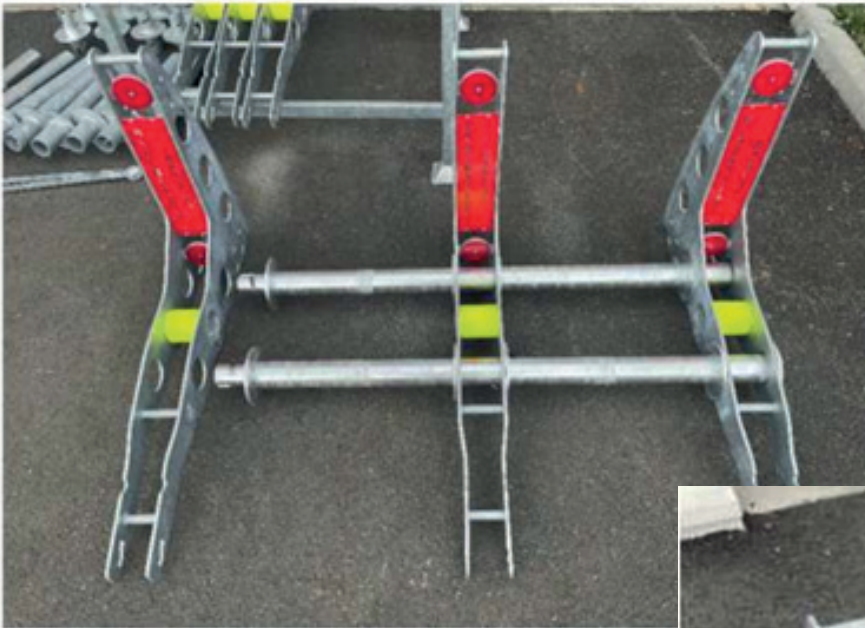
4. Screw short male starting tube with plug through first block.



Warning: while screwing the plug the weld seam side should be on the block (it will be helpful for dismounting)

Setup steps

5. Screw plugs and connecting tubes. Install second bracket and screw with plug/connection tube. Do the same process until last block.



6. Put short female starting tube at the right end of the barrier.



Setup steps

17. Screw both sides of the barrier using the keys.



18. Remove or suspend the swivel wheels.



End of setup



To dismount the barrier use,
reverse the step from 7 to 1